



Quality, Safety, Security

[www.BoyleTransport.com](http://www.BoyleTransport.com)  
CONFIDENTIAL

## WHY BOYLE?

- 50 years transporting security-sensitive cargo
- Extensive quality, safety, and security expertise
- Industry leading safety performance
- Company-owned fleet– no 3rd parties or subcontractors
- Early adopter of ADAS
- Continuous improvement culture
- Zero losses



AWARD-WINNING WORK ENVIRONMENT  
PEOPLE ARE OUR MOST IMPORTANT ASSETS



**2021 BEST Fleets**  
**TO DRIVE FOR**  
**BEST Overall | SMALL CARRIER**



**2021 TOP COMPANIES**  
**FOR WOMEN TO WORK FOR**  
**IN TRANSPORTATION**  
WOMEN IN TRUCKING ASSOCIATION

## *Detroit Assurance 5.0*



## *What is missing in the video...*

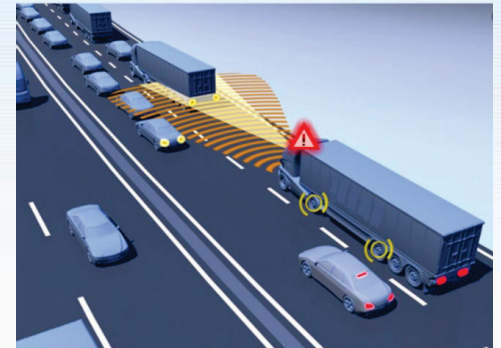


- **False Positives**

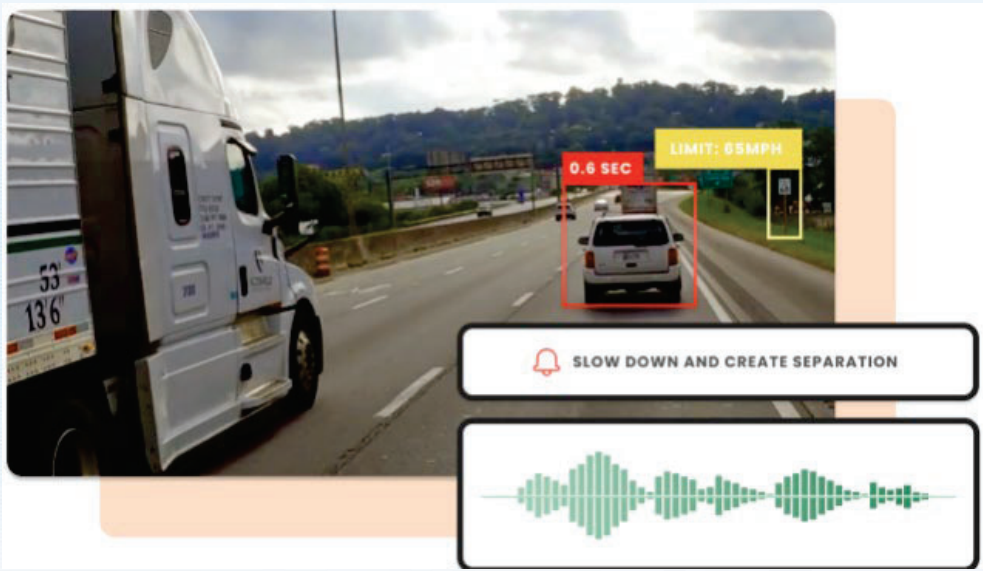
- Situations where the system does NOT function as expected
  - Professional Drivers need to be made aware of situations where they can expect a higher likelihood of a false positive and how to compensate

- **Calibrations**

- The term “self-calibrating” is extremely misleading
  - Professional Drivers need to be trained how to identify a calibration issue and how to report it to maintenance staff
  - Maintenance staff must be trained how to identify/address calibration issues and UPDATES!



VIDEO-BASED SAFETY MANAGEMENT



- Gameification, incentive compensation
- Continuous improvement, coaching
- Exoneration from fraudulent claims



## *Challenges presented by ADAS technology*

### **There are numerous systems/versions available in the market**

- Differing capabilities
- Wide range in the levels of intervention and types of alerts
- Differing maintenance requirements
- Limited technical information provided by the manufacturers
- False positives



### **Training**

- Professional drivers will create their own theories in the absence of training
- This creates uncertainty and reluctance to use the safety systems in the truck
- Bad information gets shared across the fleet
- What is each system for? What does each alert mean? The fight against complacency!
- Professional drivers and maintenance need to be trained how to interact with and maintain each system



## *Do These Systems Work?*



### **We have eliminated catastrophic accidents!**

- **ZERO rear end collisions**
- **ZERO rollovers/jackknife accidents**
- **ZERO preventable recordable accidents**
- **Average cost per accident is less than \$1,200 (pre-pandemic)**
- **Minor, low speed maneuvering accidents are the area of focus**



*Thank You!*



Michael Lasko  
Director of EHS and Quality  
Boyle Transportation

E: [Michael.Lasko@boyletransport.com](mailto:Michael.Lasko@boyletransport.com)  
O: 978-670-3429

<https://www.linkedin.com/in/h-michael-lasko-b651ba65>

